

QUICK START GUIDE: FOR MENTORS

Here's what you need to know before getting started...

YOUR COMMITMENT

Each mentoring period is expected to last around 6 months. We advise meeting once a month for one hour. The Mentee is expected to drive the relationship by arranging the meetings and updating documents.

The mentoring period can be longer or shorter depending on the needs of the Mentee but we advise no shorter than three months and no longer than 12.

THE ENROLLMENT PROCESS

To enrol you must head to the MyMentor section of GlobalWelsh Connect and click on 'Apply to be a Mentor' on the top left hand side. In order for your application to be accepted you'll need to ensure that your Connect profile is complete and provide some additional details.

To enrol and access the MyMentor section you must have an active Pioneer, Pathfinder or Business membership.

FINDING MENTEES

Once you have enrolled, you will be listed as an available Mentor on the MyMentor section of GlobalWelsh Connect. Mentees will then send match requests if they think you could be a suitable Mentor. You can then approve or decline these requests.

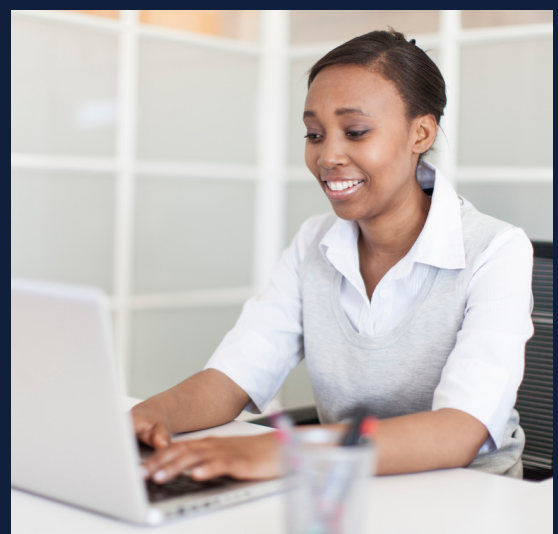
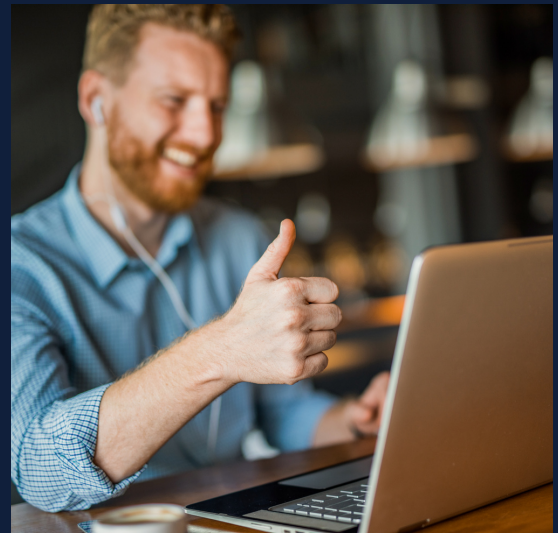
The system allows you to match with up to two Mentees at any one time. But you have the ability to switch your availability off and back on again at any point should your circumstances and capacity change.

START THE PROCESS

To get started head over to the Connect platform (connect.globalwelsh.com), login or sign-up for free.

Once on the platform ensure that you have a Pioneer, Pathfinder or Business membership to access the MyMentor section (plus a lot more). Head to the Memberships section to check or upgrade.

Read the Guide for Mentors carefully before enrolling, follow the steps.



Please reach out if you need any further support via mymentor@globalwelsh.com